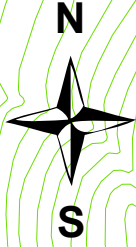


Newport Town Forest & Adjacent Trails



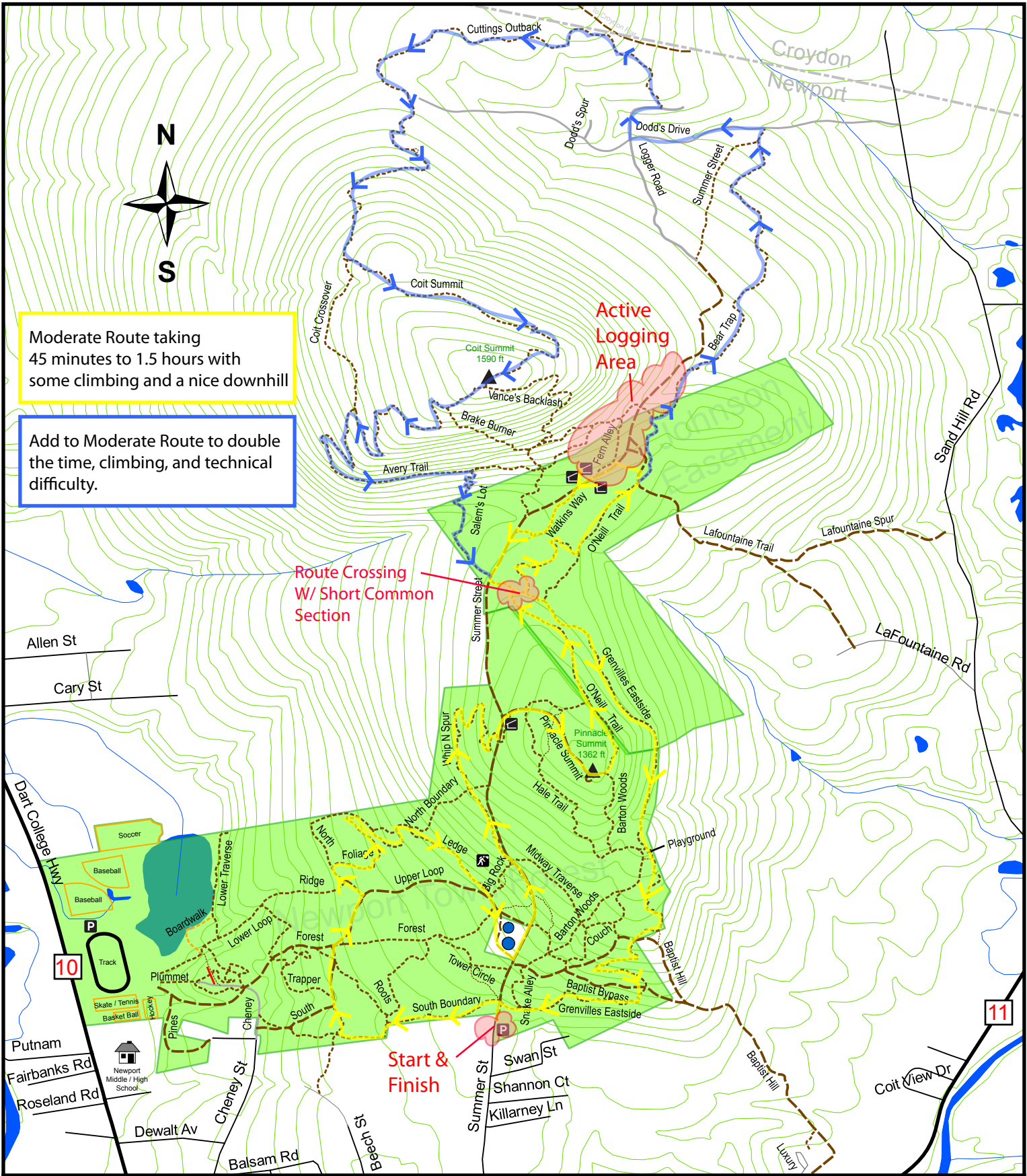
Moderate Route taking 45 minutes to 1.5 hours with some climbing and a nice downhill

Add to Moderate Route to double the time, climbing, and technical difficulty.

Route Crossing W/ Short Common Section

Active Logging Area

Start & Finish



- ▲ Summit
- Ⓟ Parking
- Ⓜ Cave
- Ⓜ Historic Foundation
- Water Tower
- Stream
- Water Body
- Conservation Area
- - - Trail - Single Track
- Trail - Double Track
- Dirt Road
- Paved Road

GPS Trail Data: Ryan O'Brien
 Cartographer: Ryan O'Brien
 GRANIT DATA, NAD 83
 Contour Interval: 20 ft

